


WATER TREATMENT



CATALOGUE 2024

 Represents Quality and Reliable Products

WAVIN TECHNOLOGY PTE LTD

1004, Eunos Avenue 8, #01-05, Singapore 409499

Tel: 6294 7877 Fax: 6294 9315

Website: www.wavin.com.sg E-Mail: sales@wavin.com.sg

The data given in this leaflet are offered in good faith. We reserve the right to carry out any modification.





Pipe with scale deposits



Washing machine heating element



Heating element



Tube heat exchanger



Water feeder with biofilm

Are you tired of dealing with rust and scale buildup in your water pipes and equipment? Look no further than our eco-friendly water treatment system. Our innovative method uses a **Magnetic Field (MF) device** to treat your water without harmful chemicals or salt, providing reliable protection 24/7.

Our system changes the crystallization process of calcium in hard water, preventing it from sticking to surfaces and causing hard scale deposits. This minimizes maintenance costs and extends the lifespan of your appliances, optimizing energy efficiency and reducing downtime. Plus, our MF device works in both up and downstream directions, even in no-flow conditions, ensuring consistent protection throughout your entire system.

Our strategically installed MF device provides maximum protection where limescale buildup is most common, but since the signal travels throughout the entire system, all parts are protected. By using randomly varying electric fields to cluster ions in hard water, our system produces nuclei (seed crystals) that grow between .05 and 50 microns in suspension, which are then washed away in the flow when water is heated. This treatment method dissolves existing scale in just a few months, leaving your water clean and fresh.

For even better results, **we recommend to complete with our water filtration system** before any industrial or residential appliances and drinking faucets. Our system disintegrates old limescale deposits, prevents the formation of water scale, and minimizes maintenance expenses. By optimizing energy costs and reducing the consumption of detergents and agents for chemical softening of water, our system is both cost-effective and environmentally friendly.

Features

- Avoid contaminants such as bacteria/virus to trap and breed in corroded parts or limescale deposits
- Disintegrate old limescale deposits, especially to old buildings and estates.
- Prevent formation of water scale in pipes and apparatuses.
- Prevent depleting heat exchange efficiency due the limescale formation, optimize energy savings.
- Constrain an inner surface corrosion of ferrous parts.
- Reduce maintenance costs and down-time costs; increase service life of pipe-lines and appliances.
- Decrease a consumption of detergents and agents for chemical softening of water.
- Environmental-friendly operation without using any chemicals.

Treatment Effects – Before & After



Grill plate in a professional kitchen



Piping system



Cooling tower grid

TEST REPORT: 7191087813-CHM14-01-LYP

Date: 28 MAY 2014 Tel: +65 68851346 Fax: +65 67732912

Client's Ref: - Email: Yin-Pheng.LEONG@tuv-sud-psb.sg

Note: This report is issued subject to the Testing and Certification Regulations of the TÜV SÜD Group and the General Terms and Conditions of Business of TÜV SÜD PSB Pte Ltd. In addition, this report is governed by the terms set out within this report.



PSB Singapore

Choose certainty.
Add value.

SUBJECT

Microbiological Analysis of Water

CLIENT

Wavin Technology Pte Ltd
1004 Eunos Venue 8
#01-05
Singapore 409499

SAMPLE SUBMISSION DATE / TEST DATE

16 May 2014 / 19 May 2014

DESCRIPTION OF SAMPLE

2 water samples were submitted.

Sample	Description
Sample 1	Water collected from [redacted] B2 pump room water tank dated 03/04/2014
Sample 2	Water collected from [redacted] B2 pump room water tank dated 15/05/2014 after installation of [redacted] dated 01/04/2014

METHOD OF TEST

Standard Methods for the Examination of Water and Wastewater, 22nd Edition, 2012 (APHA-AWWA-WEF)

- Part 9213E. Membrane Filter Technique for *Pseudomonas aeruginosa*
- Part 9215B. Heterotrophic Plate Count - Pour Plate Method
- Part 9222B. Standard Total Coliform Membrane Filter Procedure, Fecal Coliforms and *Escherichia coli*
- Part 9230C. Fecal Streptococcus and Enterococcus - Membrane Filter Techniques

ISO 6461/1 1986 "Water quality - Detection and enumeration of the spores of sulphite-reducing Anaerobes (clostridia) - Method by enrichment in a liquid medium"



TÜV SÜD PSB

Laboratory:
TÜV SÜD PSB Pte. Ltd.
No.1 Science Park Drive
Singapore 118221

Phone : +65-6885 1333
Fax : +65-6776 8670
E-mail: testing@tuv-sud-psb.sg
www.tuv-sud-psb.sg
Co. Reg : 199002667R

Regional Head Office:
TÜV SÜD Asia Pacific Pte. Ltd.
3 Science Park Drive, #04-01/05
The Franklin, Singapore 118223
TÜV®

TEST REPORT: 7191087813-CHM14-01-LYP
28 MAY 2014



RESULTS

Test	Sample 1	Sample 2	AVA Guidelines for Drinking Water (Singapore)
Total Colony Count, CFU per ml	1 200	16	Not more than 100 000 per ml
Total Coliforms, CFU per 250 ml	Less than 1	Less than 1	Not detectable per 250 ml
<i>Escherichia coli</i> , CFU per 250 ml	Less than 1	Less than 1	Not detectable per 250 ml
<i>Pseudomonas aeruginosa</i> , CFU per 250 ml	Less than 1	Less than 1	Not detectable per 250 ml
Fecal streptococci, CFU per 250 ml	Less than 1	Less than 1	Not detectable per 250 ml
<i>Staphylococcus aureus</i> , CFU per 250 ml	Less than 1	Less than 1	Not detectable per 250 ml
Sporulating sulphite reducing anaerobes per 50 ml	Not detected	Not detected	Not detectable per 50 ml

Notes :

CFU : Colony Forming Unit

Remarks :

The above test results related to the samples as received.

MS AW HWEE YING

MS AW HWEE YING
TECHNICAL EXECUTIVE

Mrs Kam-Leong Yin Pheng

MRS KAM-LEONG YIN PHENG
PRODUCT MANAGER
MICROBIOLOGY
CHEMICAL & MATERIALS

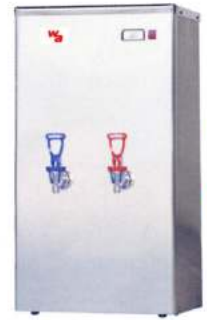


Represents Quality and Reliable Products

WAVIN
WATER SOLUTIONS



White Silver Wine Black



WAVIN
X
Gorani®

purified

Alkaline

Sparkling



WAVIN TECHNOLOGY PTE LTD

Blk 1004 Eunos Avenue 8, #01-05, Singapore 409499

Tel: 6294 7877 Fax: 6294 9315

Website: www.wavin.com.sg E-Mail: sales@wavin.com.sg

The data given in this leaflet are given in good faith. We reserve the right to carry out any modification

FILTERING MATERIALS

OUR WIDE RANGE OF FILTERING MATERIALS ALLOW YOU TO GUARANTEE SAFE WATER AND QUALITY DEPENDING ON FINDINGS.

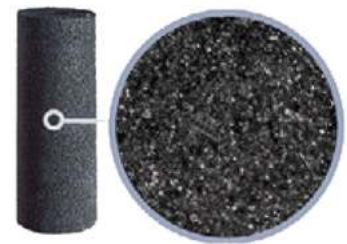
CARTRIDGES

For different degrees of filtering mechanics.



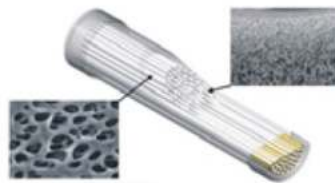
VEGETABLE CARBON BLOCK*

Vegetable carbon cartridge sintered with filtration degree of 5 microns



SILVER PLATED VEGETABLE CARBON BLOCK*

Vegetable carbon cartridge sintered with filtration degree of 0.5 microns



HOLLOW FIBER

Ultra filtration cartridge with filtration degree of 0.1 micron
Sizes: D 25mm, L140mm



MELT BROWN*

Polypropylene pre-filter cartridge wrapped with filtration degree of 5 micron

**REFINE+
HIGH FLOW**

Gorani®
Made in Italy

FOR DRINKING WATER

**REFINE
CLASSIC**



Gorani filters are industry certified with highest safety and quality control. We strive for continuous improvement by delivering better and quality products.

We have been trusted since early 2000s and our portfolios include hospitals, hotels, schools, vessels, F&B establishments, recreation/fitness clubs, factories, workshops, malls, shops, offices, homes and more.

Refine+/Refine Classic filters are combined with the use of double surface polyethylene fibre membrane and powdered activated carbon obtained from coconut. Refine comes in one standard size of 10 inch; whereas Refine+ comes in three sizes of 10, 15 & 20 inch.

This appliance is for the treatment of drinking water. It filters out impurities as small as 0.5 micron, remove pollutants (suspended microparticles, dirt/rust, mould & algae), chlorine and other undesirable taste/odours; reduce metals and toxic organic compounds.



Cartridge Replacement

1. Turn off the water coming into the filter
2. **Removal:** Release pressure by discharging the water. Raise the cartridge securing clip by pushing it upward, rotate the exhausted cartridge clockwise and pull it down.
3. **Mounting:** Remove the protective cap from the new cartridge (use it on the exhausted cartridge to prevent any undesired dripping). Place the new cartridge beneath the opening; make sure that one of the two securing clips is lined up to the reference point before pushing the cartridge upward. Rotate it counter-clockwise and pull down the securing clip.
4. Turn on the water and let the water run for a few liters before beginning actual use.

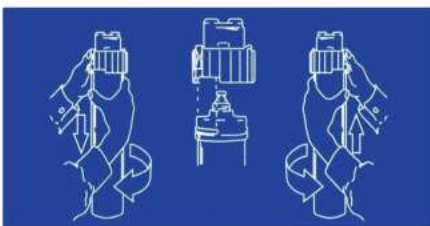
***Note:** The appliance must operate strictly in a vertical position except for special versions.



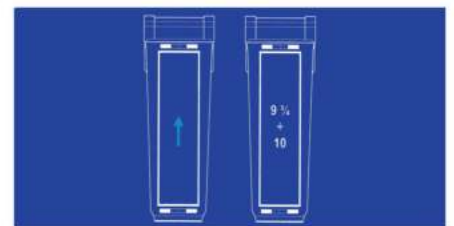
Cartridge Replacement

1. Turn off the water coming into the filter
2. **Removal:** Disconnect the pipes from their fittings and release pressure by discharging the water. Quick pulling-off the exhausted cartridge from the bottle.
3. **Reload:** Wash the bottle before inserting the new cartridge (wrap the exhausted cartridge to prevent any undesired dripping).
4. Turn on the water and let the water run for a few liters before beginning actual use.

***Note:** The appliance must operate strictly in a vertical position except for special versions.



Warning: This equipment requires regular maintenance periodically to ensure the requirements of potability of the drinking water treated and maintenance improvements as declared by the producer. Do not use with microbiologically dangerous water. Wash with care or replace the appliance after long periods of inactivity (3/4 weeks). Cartridge casing made entirely out of recyclable material (PP).



**No Drilling
Installation
Available!**



Each System includes:

1. Filter Connector : Made of solid brass and hardness support with cartridge securing clip.
2. Disposal Refine+ filter cartridge
3. Wall-bracket & Necessary Sanitary Fittings

*Optional - No Drilling Design for easy installation

REFINE+
Swiss Technology
Design For Rapid Flow

Gorani®
Made in Italy
FOR DRINKING WATER

Today's Highlight:

Undersink Drinking Water Ultra-Filtration System...

- 2+2 Stages: Sediment & Silver Granular Activated Carbon (GAC) + Ultra-Filtration Media & Silver-plated Carbon Block (PAC)
- Cleaner & Better-Tasting Water
- Drinking water treating up to 0.1 Micron
- Retain water with mineral contents.
- Easy DIY installation and Quick-Connect replacement
- Gorani filters are industry certified with highest safety and quality control.



Refine+ Prelim filters are combined with the use of G.A.C. and Melt Blown sediment filter. Filtering module is in polypropylene fibre which filters out impurities up to 5 micron; while silver salts impregnated in carbon prevents bacteria from multiplying inside the filter. Refine+ Prelim comes in three sizes.



Autonomy with 2 ppm of chlorine present*:
10": Capacity 450 l/h – can treat up to 30,000 lt.
15": Capacity 500 l/h – can treat up to 45,000 lt.
20": Capacity 550 l/h – can treat up to 75,000 lt.

This appliance is recommended to combine with other Refine+ Composite Filter for the treatment of drinking water.



Refine+ Ultra filters are combined with the use of special Hollow Fiber membrane and Silver-plated Carbon Block to prevent bacteria from multiplying inside the filter. Refine+ Ultra comes in three sizes.

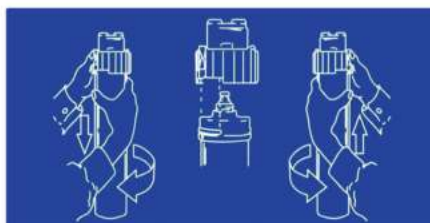
This appliance is for the treatment of drinking water. It filters out impurities up to 0.1 micron, remove pollutants (suspended microparticles, dirt/rust, mould & algae) & bacterial count up to 99.9999% with anti-bacteriostatic action, chlorine and other undesirable taste/odours; reduce metals and toxic organic compounds.



Autonomy with 2 ppm of chlorine present*:
10": Capacity 180 l/h – can treat up to 5,000 lt.
15": Capacity 300 l/h – can treat up to 10,000 lt.
20": Capacity 400 l/h – can treat up to 15,000 lt.

*The autonomy is inversely proportional to the amount of chlorine present. The capacity of the mechanical filtration is strongly linked to the characteristics of the water to be treated.

Min/Max inlet water temperature: 3/30°C.
Operating Pressure: 1~7 bar (15~100psi)



Warning: This equipment requires regular maintenance periodically to ensure the requirements of potability of the drinking water treated and maintenance improvements as declared by the producer. Do not use with microbiologically dangerous water. Wash with care or replace the appliance after long periods of inactivity (3/4 weeks). Cartridge casing made entirely out of recyclable material (PP).

Gorani®
Made in Italy

FOR DRINKING WATER

TYPES OF 10" HOUSING



Model: G100

Inlet & Outlet: 1/2"

Working pressure up to 8 bar (116psi)



Model: G101 with Key

Inlet & Outlet: 1/2"



Model: G102

Inlet & Outlet: 3/4"

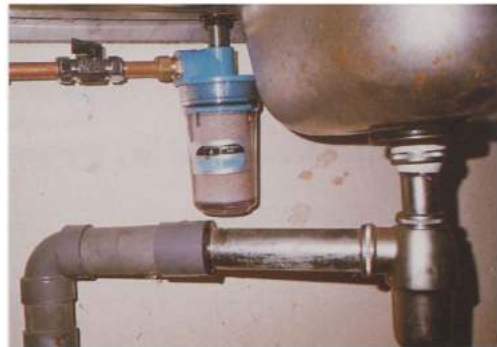


REFINE101 FILTER HOUSING

METHODS OF INSTALLATION



MAIN PIPE INSTALLATION



UNDER SINK INSTALLATION



QUICK & EASY INSTALLATION



Gorani®

Made in Italy

FOR DRINKING WATER

REFINE101 FILTER CARTRIDGE

Model: PP/G125

Polypropylene



- Water is filtered up to 25 Micron.
- Suitable to retain, dust, rust & etc.
- Replace cartridge after 5,000 litres of usage or when necessary.

Available in 1, 5 & 25 micron

Model: Prelim/G101

Composite with Granular Activated Carbon (GAC)



- Water is filtered up to 5 Micron removing particles such as dust, rust & etc.
- Suitable to reduce chlorine, bad odours & tastes.
- Replace cartridge after 7,000 litres of usage or when necessary.

Available in 3 & 5 micron

Model: Absolute

Poly-Philic with PES Membrane



- Water is filtered up to 1.2 Micron; ensuring lower pressure drop at high flow rate.
- Chemical-resistance & fine filtration suitable for semiconductor, photoelectric and F&B industries.
- Certified by FDA.
- Replace cartridge preferably no longer than 6 months or when necessary.

Available in 0.04, 0.1, 0.2 & 1.2 micron

Model: Classic/Uni

Composite with Carbon Block (PAC)



- Water is filtered to 0.5 Micron removing pollutants (suspended microparticles, dirt/rust, mould & algae).
- Suitable to remove chlorine, undesirable odours & tastes; and reduce metals & toxic organic compounds.
- Replace cartridge after 7,000 litres of usage or when necessary.

Model: Ceramic/Candle

Ceramic



- Water is filtered up to 0.5 Micron.
- Suitable to retain, dust, rust & etc.
- Remove cartridge and scrub with brush if necessary.
- Replace when the lining is too thin.



Gorani®
Made in Korea
FOR DRINKING WATER

RESTORE101 FILTER CARTRIDGE



**4-Stages Alkaline-X System
for Drinking Water Dispenser**

- ❖ 11" U-Type Water Filter Cartridge
- ❖ Drinking water treating up to 5 Micron
- ❖ Water pH level between 8.5~9.5
- ❖ Free Service Kit (Elbow Connectors & Tube Hose)

Sediment

- Pre-Filter treating up to 5 Micron.
- Suitable to remove pollutants such as sand, dirt/rust & etc.
- Filter Material: Polypropylene (PP)
- Replace cartridge after 1,800 litres of usage or when necessary, but not more than 1 year.

Carbon (GAC)

- Absorb chlorine and reduce organic compounds.
- Remove bad odours and tastes.
- Anti-Bacteria as silver carbon inhibits bacteria growth.
- Prevents hydrolysis and enhances the lifespan of the membrane.
- Filter Material: Silver Granular Activated Carbon
- Replace cartridge after 3,500 litres of usage or when necessary, but not more than 1 year.

Carbon (PAC)

- Remove excess residues (Chlorine, Tastes & Odours).
- Remove metals & organic compounds.
- Better contaminant removal as in contact with carbon for longer period.
- Improve drinking water quality & taste.
- Filter Material: Powdered Activated Carbon Block
- Replace cartridge after 3,500 litres of usage or when necessary, but not more than 1 year.

Alkaline

- Alkaline + Hydrogen
- Produce pH level between 8.5~9.5.
- Increases negative ions, Magnesium (Mg) & Hydrogen (H+)
- Enhance antioxidant activity which boost body energy & hydration.
- Filter Material: Bio-Ceramic/Coral Sand
- Replace cartridge after 5,500 litres of usage or when necessary, but not more than 1 year.

**4-Stages Alkaline-Y System
for Drinking Water Dispenser**

- ❖ 11" U-Type Water Filter Cartridge
- ❖ Drinking water treating up to 0.01 Micron
- ❖ Water pH level between 8.5~9.5
- ❖ Free Service Kit (Elbow Connectors & Tube Hose)



Carbon (GAC)

- Absorb chlorine and reduce organic compounds.
- Remove bad odours and tastes.
- Anti-Bacteria as silver carbon inhibits bacteria growth.
- Prevents hydrolysis and enhances the lifespan of the membrane.
- Filter Material: Silver Granular Activated Carbon
- Replace cartridge after 3,500 litres of usage or when necessary, but not more than 1 year.

Ultra

- Remove pollutants up to 0.01 Micron such as dissolved substances, bacteria & some viruses.
- Retain water with mineral contents.
- Filter Material: Polysulfone Membrane
- Replace cartridge after 2,000 litres of usage or when necessary, but not more than 1 year.

Carbon (PAC)

- Remove excess residues (Chlorine, Tastes & Odours).
- Remove metals & organic compounds.
- Better contaminant removal as in contact with carbon for longer period.
- Improve drinking water quality & taste.
- Filter Material: Powdered Activated Carbon Block
- Replace cartridge after 3,500 litres of usage or when necessary, but not more than 1 year.

Alkaline

- Alkaline + Hydrogen
- Produce pH level between 8.5~9.5.
- Increases negative ions, Magnesium (Mg) & Hydrogen (H+)
- Enhance antioxidant activity which boost body energy & hydration.
- Filter Material: Bio-Ceramic/Coral Sand
- Replace cartridge after 5,500 litres of usage or when necessary, but not more than 1 year.

Each System includes:

1. Filter Connector : Made of solid brass and hardness support with cartridge securing clip.
2. Disposal Refine+ filter cartridge
3. Wall-bracket & Necessary Sanitary Fittings

*Optional - No Drilling Design for easy installation

REFINE+
Swiss Technology
Design For Rapid Flow

Gorani®
Made in Italy
FOR DRINKING WATER



Refine+ Prelim filters are combined with the use of G.A.C. and Melt Blown sediment filter. Filtering module is in polypropylene fibre which filters out impurities up to 5 micron; while silver salts impregnated in carbon prevents bacteria from multiplying inside the filter. Refine+ Prelim comes in three sizes.

This appliance is recommended to combine with other Refine+ Filter for the treatment of drinking water.



Autonomy with 2 ppm of chlorine present*:
 10": Capacity 450 l/h – can treat up to 30,000 lt.
 15": Capacity 500 l/h – can treat up to 45,000 lt.
 20": Capacity 550 l/h – can treat up to 75,000 lt.

Gorani®
Made in Korea
FOR DRINKING WATER

RESTORE101 FILTER CARTRIDGE



2+4 Stages Alkaline-Z System for Drinking Water Dispenser

- ❖ External 2-in-1 10" Prelim 5 Micron Water Filter Cartridge
- ❖ 11" U-Type Water Filter Cartridge
- ❖ Drinking water treating up to 0.001 Micron
- ❖ Water pH level between 8.5~9.5
- ❖ Free Service Kit (Elbow Connectors & Tube Hose)

Nano	Carbon (PAC)	Alkaline	Mineral
<ul style="list-style-type: none"> Remove pollutants up to 0.001 Micron, a step away to essential pure water. Removes bacteria, most organic compounds (multivalent ions), a range of salts and nearly all viruses. Retain some mineral contents. Filter Material: Polypropylene (PP)/Polysulfone Replace cartridge after 2,000 litres of usage or when necessary, but not more than 1 year. 	<ul style="list-style-type: none"> Remove Chlorine, Tastes & Odours. Remove metals & organic compounds. Better contaminant removal as in contact with carbon for longer period. Improve drinking water quality & taste. Filter Material: Powdered Activated Carbon Block Replace cartridge after 3,500 litres of usage or when necessary, but not more than 1 year. 	<ul style="list-style-type: none"> Alkaline + Hydrogen Produce pH level between 8.5~9.5. Increases negative ions, Magnesium (Mg) & Hydrogen (H+) Enhance antioxidant activity which boost body energy & hydration. Filter Material: Bio-Ceramic/Coral Sand Replace cartridge after 5,500 litres of usage or when necessary, but not more than 1 year. 	<ul style="list-style-type: none"> Mineral + Activated Carbon Enrich water with natural alkaline minerals from precious stones. Reintroduce useful electrolytes, improve pH content and neutralise surplus acid. Filter Material: Natural Mineral Crystal Replace cartridge after 3,000 litres of usage or when necessary, but not more than 1 year.



'Wa' **COMO** water dispenser is beneficial as:

It is ideal to use at home, office or showroom. **SAVE** space!

A long-term investment, **SAVE** money! It cuts waiting, **SAVE** time!

It comes with options in Purification Water Filter System from Italy or

Alkaline Water Filter System from Korea. Good water, better life!

It serves **HOT WATER** (about 90 degree) and **COLD WATER** (about 4 degree).

Contact us for more information!

COMO PLUS:
Hot & Cold Water

COMO:
Hot & Cold Water

WA-815S	MODEL	WA-815T
PHYSICAL		
Floor Stand Cold & Hot Water Dispenser	TYPE	Table Top Cold & Hot Water Dispenser
300mm(W)X365mm(D)X1115mm(H)	PRODUCT DIMENSION	300mm(W)X365mm(D)X520mm(H)
22.00KGS	GROSS WEIGHT	20.00KGS
ELECTRIC		
AC220~240V 50/60Hz, 100~127v 50/60Hz	POWER	AC220~240V 50/60Hz, 100~127v 50/60Hz
Hermetic Compressor	COMPRESSOR	Hermetic Compressor
R134a	REFRIGERATION GAS	R134a
110W (Cold) ; 480W (Hot)	POWER CONSUMPTION	110W (Cold) ; 480W (Hot)
MECHANICAL		
High Impact High Gloss ABS Resin	CABINET	High Impact High Gloss ABS Resin
0.8T EGI Sheetmetal	STRUCTURE SHEETMETAL	0.8T EGI Sheetmetal
Cold: 3.8 Liters Hot: 2.0 Liters	WATER RESERVOIR / CAPACITY (ALL STAINLESS BUILD)	Cold: 3.8 Liters Hot: 1.5 Liters
Push Blue Lever	FAUCET (COLD)	Push Blue Lever
Push Red Lever / Child Safety Lock Lever	FAUCET (HOT)	Push Red Lever / Child Safety Lock Lever
Thermostat w/Bi-metal	TEMPERATURE CONTROL	Thermostat w/Bi-metal
24 hours instantaneous	FACILITY	24 hours instantaneous
1. Environment Friendly & Energy Efficiency Design. 2. Hot water safety lock design. 3. Overload Relay cuts off electrical power if temperature rises to an unsafe level. 4. Hot Water Tank Insulation foam, UL approved 5. 1/4" Water inlet	FEATURES	1. Environment Friendly & Energy Efficiency Design. 2. Hot water safety lock design. 3. Overload Relay cuts off electrical power if temperature rises to an unsafe level. 4. Hot Water Tank Insulation foam, UL approved 5. 1/4" Water inlet
1. Parts: Main Body; Power cord; Water Tubes; PP Fittings 2. Filter System (if applicable)	PACKAGE CONTENTS	1. Parts: Main Body; Power cord; Water Tubes; PP Fittings 2. Filter System (if applicable)
1. 6 months against Manufacturer's defects 2. 1 Year against Manufacturer's defects if installed with 'Gorani' Filter System. 3. Optional Add-On Warranty	WARRANTY	1. 6 months against Manufacturer's defects 2. 1 Year against Manufacturer's defects if installed with 'Gorani' Filter System. 3. Optional Add-On Warranty



SUPERIOR PLUS:
Hot, Cold & Ambient
Water



SUPERIOR:
Hot, Cold & Ambient
Water

'Wa' **SUPERIOR** water dispenser is beneficial as:
It is ideal to use at home, office or showroom. **SAVE** space!
A long-term investment, **SAVE** money! It cuts waiting, **SAVE** time!
It comes with a set of Purification Water Filter System from Italy and 1 year
Warranty against manufacturer defects, extended warranty option is available!
Water filter replacement is suggested within 6 months. Good water, better life!
Contact us for more information!

WA-3019S	MODEL	WA-3019T
PHYSICAL		
Floor Stand Cold & Hot Water Dispenser	TYPE	Table Top Cold & Hot Water Dispenser
280mm(W)X530mm(D)X1165mm(H)	PRODUCT DIMENSION	280mm(W)X540mm(D)X550mm(H)
42.00KGS	GROSS WEIGHT	25.00KGS
ELECTRIC		
AC220~240V 50/60Hz, 110V 50/60Hz	POWER	AC220~240V 50/60Hz, 110V 50/60Hz
Hermetic Compressor	COMPRESSOR	Hermetic Compressor
R134a	REFRIGERATION GAS	R134a
170W (Cold) ; 750W (Hot)	POWER CONSUMPTION	170W (Cold) ; 750W (Hot)
MECHANICAL		
Cold: 6°C ~ 11°C ; Hot: 95°C ~ 100°C	WATER TEMPERATURE	Cold: 6°C ~ 11°C ; Hot: 95°C ~ 100°C
Ambient: 6.4 Liters Cold: 2.8 Liters Hot: 7.5 Liters	WATER RESERVOIR / CAPACITY (ALL STAINLESS BUILD)	Ambient: 3 Liters Cold: 1.7 Liters Hot: 5.0 Liters
Press Black Lever	FAUCET (AMBIENT/COLD)	Press Black Lever
Press Red Lever / Child Safety Lock Lever	FAUCET (HOT)	Press Red Lever / Child Safety Lock Lever
2 Thermostats: WAKO (Japanese Brand)	TEMPERATURE CONTROL	2 Thermostats: WAKO (Japanese Brand)
24 hours instantaneous	FACILITY	24 hours instantaneous
1. Hot water safety lock design. 2. Water leaking circuit breaker, cutting off water automatically to avoid disasters. 3. Overload Relay cuts off electrical power if temperature rises to an unsafe level. 4. Hot Water Tank Insulation foam, UL approved 5. 1/2" Water inlet	FEATURES	1. Hot water safety lock design. 2. Water leaking circuit breaker, cutting off water automatically to avoid disasters. 3. Overload Relay cuts off electrical power if temperature rises to an unsafe level. 4. Hot Water Tank Insulation foam, UL approved 5. 1/2" Water inlet
1. Parts: Main Body; Power cord; Water Tubes; PP Fittings 2. Filter System (if applicable)	PACKAGE CONTENTS	1. Parts: Main Body; Power cord; Water Tubes; PP Fittings 2. Filter System (if applicable)
1. 6 months against Manufacturer's defects 2. 1 Year against Manufacturer's defects if installed with 'Gorani' Filter System. 3. Optional Add-On Warranty	WARRANTY	1. 6 months against Manufacturer's defects 2. 1 Year against Manufacturer's defects if installed with 'Gorani' Filter System. 3. Optional Add-On Warranty



TAHOE:
Hot & Ambient
Water



TAHOE PLUS:
Hot & Ambient
Water



'Wa' **TAHOE** water dispenser is beneficial as:
Valued investment with convenience! It's instant, **SAVE** time!
It is ideal to use at bedroom, study room, kitchen, office & pantry.
Purchase with 'Gorani' Purification Water Filter System from Italy for
extended warranty against manufacturer defects! Water filter replacement
is suggested within 6 months. Good water, better life!
Contact us for more information!

WB-33	MODEL	WB-33A
PHYSICAL		
Table-Top Instant Hot Water Dispenser 170mm(W)X170mm(D)X290mm(H)	TYPE	Table-Top Instant Hot Water Dispenser 310mm(W)X180mm(D)X290mm(H)
1.8KG	PRODUCT DIMENSION	3KG
ELECTRIC		
AC220V 50Hz	POWER	AC220V 50Hz
2100W	POWER CONSUMPTION	2100W
MECHANICAL		
25/45/60/80/90/100°C	WATER TEMPERATURE	25/45/60/80/90/100°C
N.A.	WATER RESERVOIR / CAPACITY (OPTIONAL ATTACHMENT)	2 Liters
Filtered Water / Pure Water	WATER INPUT/SOURCE	Filtered Water / Pure Water
Digital Display	TEMPERATURE CONTROL	Digital Display
1. Environment Friendly & Energy Efficiency Design. 2. Child Lock Button 3. Instant heating in 3 seconds. 4. Touch screen with 5 temperature modes for different drinking experiences. 5. Tea-brewing function.	FEATURES	1. Environment Friendly & Energy Efficiency Design. 2. Child Lock Button 3. Instant heating in 3 seconds. 4. Touch screen with 5 temperature modes for different drinking experiences. 5. Tea Functions 6. Removable water tank for convenience.
1. Parts: Main Body; Power cord; Water tray + Cup pad; Base of Water Tank; Tea Filter Cup; Manual 2. Filter System (if applicable)	PACKAGE CONTENTS	1. Parts: Main Body; 2L Water tank with cover; Power cord; Water tray + Cup pad; Base of Water Tank; Tea Filter Cup; Manual 2. Filter System (if applicable)
1. 3 months against Manufacturer's defects 2. Optional Add-On Warranty 3. 1 Year against Manufacturer's defects if installed with 'Gorani' Filter System.	WARRANTY	1. 3 months against Manufacturer's defects 2. Optional Add-On Warranty 3. 1 Year against Manufacturer's defects if installed with 'Gorani' Filter System.



NESS:
Hot & Ambient
Water

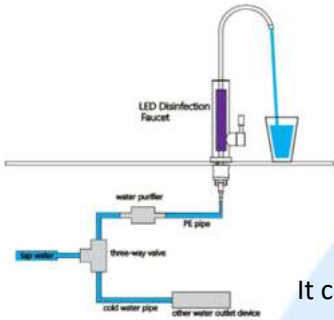


NESS PLUS:
Hot & Ambient
Water



'Wa' **NESS** water dispenser is beneficial as:
Valued investment with convenience! It's instant, SAVE time!
It is ideal to use at bedroom, study room, kitchen, office & pantry.
Purchase with 'Gorani' Purification Water Filter System from Italy for
extended warranty against manufacturer defects! Water filter replacement
is suggested within 6 months. Good water, better life!
Contact us for more information!

WB-02	MODEL	WB-02A
PHYSICAL		
Table-Top Instant Hot Water Dispenser	TYPE	Table-Top Instant Hot Water Dispenser
60mm(W)X100mm(D)X180mm(H)	PRODUCT DIMENSION	120mm(W)X205mm(D)X200mm(H)
0.6KG	GROSS WEIGHT	1KG
ELECTRIC		
AC220V 50Hz	POWER	AC220V 50Hz
2100W	POWER CONSUMPTION	2100W
MECHANICAL		
25/45/60/80/99°C	WATER TEMPERATURE	25/45/60/80/99°C
N.A.	WATER RESERVOIR / CAPACITY (OPTIONAL ATTACHMENT)	1.1 Liters
Filtered Water / Pure Water	WATER CONNECTION	Filtered Water / Pure Water
Digital Display	TEMPERATURE CONTROL	Digital Display
1. Environment Friendly & Energy Efficiency Design. 2. Travel-Friendly; Adapters for Bottled waters are provided. 3. Child Lock Button 4. Instant heating in 3 seconds. 5. Touch screen with 5 temperature modes for different drinking experiences.	FEATURES	1. Environment Friendly & Energy Efficiency Design. 2. Travel-Friendly; Adapters for Bottled waters are provided. 3. Child Lock Button 4. Instant heating in 3 seconds. 5. Touch screen with 5 temperature modes for different drinking experiences. 6. Removable water tank for convenience.
1. Parts: Main Body; Power cord; Long Hose for external large bottle; Short Hose for Water Tank; Bottle Adapter Cap; Manual 2. Filter System (if applicable)	PACKAGE CONTENTS	1. Parts: Main Body; Power cord; 1.1L Water tank with cover; Long Hose for external large bottle; Short Hose for Water Tank; Bottle Adapter Cap; Manual 2. Filter System (if applicable)
1. 3 months against Manufacturer's defects 2. Optional Add-On Warranty 3. 1 Year against Manufacturer's defects if installed with 'Gorani' Filter System.	WARRANTY	1. 3 months against Manufacturer's defects 2. Optional Add-On Warranty 3. 1 Year against Manufacturer's defects if installed with 'Gorani' Filter System.



'Wa' NEAGH counter-top water dispenser is beneficial as:

A long-term investment, SAVE money! It cuts waiting, SAVE time!
It is ideal to use at home, commercial kitchen & F&B establishments.

It comes with a set of Purification Water Filter System from Italy and 1 year Warranty against manufacturer defects, extended warranty option is available!
Water filter replacement is suggested within 6 months. Good water, better life!

Contact us for more information!

NEAGH V:
Ambient Water

NEAGH PLUS:
Hot & Ambient Water

WB-35V	MODEL	WB-35A
PHYSICAL		
UV Sterilized Filter/RO Faucet	TYPE	Faucet Instant Hot Water Dispenser
146mm(W)X42mm(D)X320mm(H)	PRODUCT DIMENSION	Faucet: 171mm(W)X48mm(D)X230mm(H) Box: 210mm(W)X70mm(D)X245mm(H)
1.30KGS	GROSS WEIGHT	2.50KGS
ELECTRIC		
AC220~240V, 50Hz	POWER	AC220V 50Hz
25~50W	POWER CONSUMPTION	2200W
MECHANICAL		
ROOM/AMBIENT	WATER TEMPERATURE	25/45/60/85/100°C
N.A.	WATER RESERVOIR / CAPACITY (OPTIONAL ATTACHMENT)	N.A.
Filtered Water / Pure Water	WATER INPUT/SOURCE	Filtered Water / Pure Water
N.A.	TEMPERATURE CONTROL	Digital Display
1. Environment Friendly & Energy Efficiency Design. 2. Cost saving with Stainless Steel Build to last. 3. Safe to use - Max working pressure at 10 bar and max working temperature at 65°C. 4. UV Sterilization guarantee water disinfect from microorganisms and pathogens. 5. No water tank avoiding contaminations.	FEATURES	1. Environment Friendly & Energy Efficiency Design. 2. Child Lock Button 3. Instant heating in 3 seconds. 4. Touch screen with 5 temperature modes for different drinking experiences. 5. No water tank avoiding contaminations.
1. Parts: Main Body; Power cord; Base of Faucet; Water Tubes; PP Fittings; Manual 2. Filter System	PACKAGE CONTENTS	1. Parts: Faucet Body; System Box; Power cord; Water Tubes; PP Fittings; Manual 2. Filter System
1. 6 months against Manufacturer's defects depending on Filter maintenance schedule. 2. Optional Add-On Warranty with Filter Maintenance Package.	WARRANTY	1. 6 months against Manufacturer's defects depending on Filter maintenance schedule. 2. Optional Add-On Warranty with Filter Maintenance Package.



'Wa' VICTORIA water dispenser is beneficial as:

A long-term investment, SAVE money! It cuts waiting, SAVE time!

It is ideal to use at home, commercial kitchen & F&B establishments.

It comes with a set of Purification Water Filter System from Italy and 1 year Warranty against manufacturer defects, extended warranty option is available! Water filter replacement is suggested within 6 months. Good water, better life!

Contact us for more information!

VICTORIA:
Hot & Cold Water

VICTORIA PLUS:
Hot & Cold Water

WA-3007CH	MODEL	WA-2000CH
PHYSICAL		
Under-Sink Cold & Hot Water Dispenser	TYPE	Under-Sink Cold & Hot Water Dispenser
190mm(W)X465mm(D)X410mm(H)	PRODUCT DIMENSION	230mm(W)X300mm(D)X417mm(H)
17.00KGS	GROSS WEIGHT	20.00KGS
ELECTRIC		
AC220~240V, 50Hz	POWER	AC220~240V 50/60Hz, 110V 50/60Hz
Hermetic Compressor	COMPRESSOR	Hermetic Compressor
Fin & copper tubing	CONDENSER	Fin & copper tubing
R134a	REFRIGERATION GAS	R134a
170W (Cold) ; 1500W (Hot)	POWER CONSUMPTION	160W (Cold) ; 750W (Hot)
MECHANICAL		
Cold: 6°C ~ 11°C ; Hot: 95°C ~ 100°C	WATER TEMPERATURE	Cold: 6°C ~ 11°C ; Hot: 95°C ~ 100°C
Cold: 1.2 Liters Hot: 3.5 Liters	WATER RESERVOIR / CAPACITY (ALL STAINLESS BUILD)	Cold: 2 Liters Hot: 3.6 Liters
Pre-Filtered Water	WATER CONNECTION	Pre-Filtered Water
Thermostat	TEMPERATURE CONTROL	Thermostat
24 hours instantaneous	FACILITY	24 hours instantaneous
1. Environment Friendly & Energy Efficiency Design. 2. Stainless steel build 3. Anti-Fingerprint coating case for easy maintenance. 4. Hot Water Tank Insulation foam, UL approved 5. Pressure Type	FEATURES	1. Double Protection with 2 Thermostats. 2. Panasonic Electricity Leakage Circuit Breaker safety equipment. 3. Safety faucet body: Anti-scalded material. 4. Safety faucet design: Avoid child scaled by hot water. 5. Hot Water Tank Insulation foam, UL approved
1. Parts: Main Body; Press-Button Faucet; Power cord; Water Tubes; PP Fittings 2. Filter System (if applicable)	PACKAGE CONTENTS	1. Parts: Main Body; Digital Panel Faucet; Power cord. 2. Filter System (if applicable)
1. 6 months against Manufacturer's defects 2. 1 Year against Manufacturer's defects if installed with 'Gorani' Filter System. 3. Optional Add-On Warranty	WARRANTY	1. 6 months against Manufacturer's defects 2. 1 Year against Manufacturer's defects if installed with 'Gorani' Filter System. 3. Optional Add-On Warranty

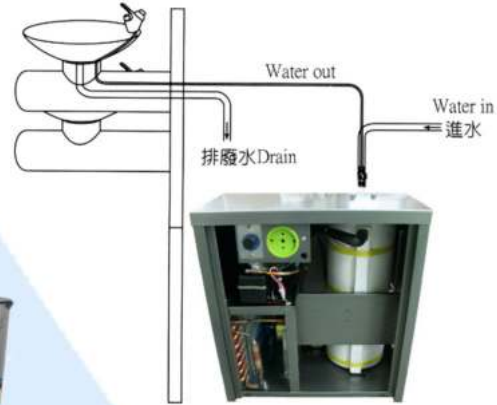


BAIKAL:
Hot & Ambient
Water

BAIKAL PLUS:
Hot & Cold Water

'Wa' **BAIKAL** water dispenser is beneficial as:
 A long-term investment, **SAVE** money! It cuts waiting, **SAVE** time!
 It is ideal to use at home, commercial kitchen & F&B establishments.
 It comes with a set of Purification Water Filter System from Italy and 1 year
 Warranty against manufacturer defects, extended warranty option is available!
 Water filter replacement is suggested within 6 months. Good water, better life!
 Contact us for more information!

WB-3004	MODEL	WC-3005
PHYSICAL		
Under Sink Hot Water Dispenser	TYPE	Under Sink Cold Water Dispenser
180mm(W)X240mm(D)X390mm(H)	PRODUCT DIMENSION	180mm(W)X320mm(D)X370mm(H)
4.50KGS	GROSS WEIGHT	12.00KGS
ELECTRIC		
AC220~240V 50/60Hz, 110V 50/60Hz	POWER	AC220~240V 50/60Hz, 110V 50/60Hz
N.A.	COMPRESSOR	Hermetic Compressor
N.A.	CONDENSER	Fin & copper tubing
N.A.	REFRIGERATION GAS	R134a
750W	POWER CONSUMPTION	170W
MECHANICAL		
95°C ~ 100°C	WATER TEMPERATURE	6°C ~ 11°C
4 Liters	WATER RESERVOIR / CAPACITY (ALL STAINLESS BUILD)	1.2 Liters
Pre-Filtered Water	WATER CONNECTION	Pre-Filtered Water
Thermostats: WAKO (Japanese Brand)	TEMPERATURE CONTROL	Thermostats: WAKO (Japanese Brand)
24 hours instantaneous	FACILITY	24 hours instantaneous
1. Environment Friendly & Energy Efficiency Design. 2. Stainless steel heating element. 3. Overload Relay cuts off electrical power if temperature rises to an unsafe level. 4. Hot Water Tank Insulation foam, UL approved 5. Pressure Type	FEATURES	1. Environment Friendly & Energy Efficiency Design. 2. Air cooling design. 3. Cold Water Tank Insulation foam, UL approved.
1. Parts: Main Body; Press-Button Faucet; Power cord; Water Tubes; PP Fittings 2. Filter System (if applicable)	PACKAGE CONTENTS	1. Parts: Main Body; Press-Button Faucet; Power cord; Water Tubes; PP Fittings 2. Filter System (if applicable)
1. 6 months against Manufacturer's defects 2. 1 Year against Manufacturer's defects if installed with 'Gorani' Filter System. 3. Optional Add-On Warranty	WARRANTY	1. 6 months against Manufacturer's defects 2. 1 Year against Manufacturer's defects if installed with 'Gorani' Filter System. 3. Optional Add-On Warranty



'Wa' **AMAZON** water dispenser is beneficial as:

A long-term investment, **SAVE** money! It cuts waiting, **SAVE** time!

It is ideal to use at public amenities, pantries & F&B establishments.

It comes with a set of Purification Water Filter System from Italy and 1 year

Warranty against manufacturer defects, extended warranty option is available!

Water filter replacement is suggested within 3 to 6 months. Good water, better life!

Contact us for more information!

AMAZON PLUS:
Hot & Cold Water

AMAZON:
Cold Water Only

WA-850CH	MODEL	WC-318
PHYSICAL		
Floor Stand Cold & Hot Water Cooler	TYPE	Water Cooler for Wall-Mounted Fountain
310mm(W)X430mm(D)X1060mm(H)	PRODUCT DIMENSION	425mm(W)X305mm(D)X490mm(H)
25.00KGS	GROSS WEIGHT	17.00KGS
ELECTRIC		
AC220~240V 50/60Hz, 110V 50/60Hz	POWER	AC220~240V 50/60Hz, 110V 50/60Hz
Hermetic Compressor	COMPRESSOR	Hermetic Compressor
Fin & copper tubing	CONDENSER	Fin & copper tubing
R134a	REFRIGERATION GAS	R134a
175W (Cold) ; 750W (Hot)	POWER CONSUMPTION (HOT)	200W (Cold)
MECHANICAL		
Cold: 4°C ~ 8°C ; Hot: 98°C ~ 100°C	WATER TEMPERATURE	6°C ~ 11°C
Pre-Filtered Water	WATER CONNECTION	Pre-Filtered Water
Running: 20 L/hr (Hot); 20 L/hr (Cold)	WATER RESERVOIR / CAPACITY (ALL STAINLESS BUILD)	2.2 Liters
Press Blue Lever ; Press Fountain Button	FAUCET (COLD)	N.A.
Press Red Lever	FAUCET (HOT)	N.A.
Thermostat	TEMPERATURE CONTROL	Thermostat
24 hours instantaneous	FACILITY	24 hours instantaneous
1. Environment Friendly & Energy Efficiency Design. 2. Stainless steel heating element & build 3. Overload Relay cuts off electrical power if temperature rises to an unsafe level. 4. Hot Water Tank Insulation foam, UL approved 5. 1/2" Water inlet	FEATURES	1. Environment Friendly & Energy Efficiency Design. 2. Air cooling design. 3. Cold Water Tank Insulation foam, UL approved. 4. 1/4" Water inlet
1. Parts: Main Body; Power cord; Water Tubes; PP Fittings 2. Filter System (if applicable)	PACKAGE CONTENTS	1. Parts: Main Body; Power cord; Water Tubes; PP Fittings 2. Filter System (if applicable)
1. 6 months against Manufacturer's defects 2. 1 Year against Manufacturer's defects if installed with 'Gorani' Filter System. 3. Optional Add-On Warranty	WARRANTY	1. 6 months against Manufacturer's defects 2. 1 Year against Manufacturer's defects if installed with 'Gorani' Filter System. 3. Optional Add-On Warranty



NILE RH:
Room & Hot Water

NILE CH:
Cold & Hot Water

'Wa' NILE water dispenser is beneficial as:

A long-term investment, SAVE money! It cuts waiting, SAVE time!

It is ideal to use at pantry, commercial kitchen & F&B establishments.

It comes with a set of Purification Water Filter System from Italy and 1 year

Warranty against manufacturer defects, extended warranty option is available!

Water filter replacement is suggested within 3 to 6 months. Good water, better life!

Contact us for more information!

WA-RH	MODEL	WA-CH
PHYSICAL		
Stainless Steel Room & Hot Water Dispenser	TYPE	Stainless Steel Cold & Hot Water Dispenser
8RH: 305mm(W)X290mm(D)X466mm(H) 16RH: 355mm(W)X320mm(D)X566mm(H) 25RH: 405mm(W)X350mm(D)X616mm(H)	PRODUCT DIMENSION	15CH: 440mm(W)X330mm(D)X620mm(H) 20CH: 440mm(W)X330mm(D)X820mm(H)
ELECTRIC		
AC220~240V 50/60Hz, 110V 50/60Hz	POWER	AC220~240V 50/60Hz, 110V 50/60Hz
Hermetic Compressor	COMPRESSOR	Hermetic Compressor
R134a	REFRIGERATION GAS	R134a
1500W~2400W (Hot)	POWER CONSUMPTION	175W (Cold) ; 2000~2400W (Hot)
MECHANICAL		
Room Temperature ; Hot: 98°C ~ 100°C	WATER TEMPERATURE	Cold: 4°C ~ 8°C ; Hot: 98°C ~ 100°C
Pre-Filtered Water	WATER CONNECTION	Pre-Filtered Water
Capacity: 8 Liters / Running: 15 L/hr Capacity: 16 Liters / Running: 25 L/hr Capacity: 25 Liters / Running: 45 L/hr	WATER RESERVOIR / CAPACITY (ALL STAINLESS BUILD)	Capacity: 15 Liters / Running: 25 L/hr (H); 15 L/hr (C) Capacity: 20 Liters / Running: 30 L/hr (H); 15 L/hr (C)
'Tomlinson' USA No-Drip Press Black Lever	FAUCET (COLD)	'Tomlinson' USA No-Drip Press Black Lever
'Tomlinson' USA No-Drip Press Red Lever / Child Safety Lock Lever (Optional)	FAUCET (HOT)	'Tomlinson' USA No-Drip Press Red Lever / Child Safety Lock Lever (Optional)
24 hours instantaneous	FACILITY	24 hours instantaneous
1. Boiling water keep up to 98°C ~ 100°C and doesn't lower the temperature. 2. Overload Relay cuts off electrical power if temperature rises to an unsafe level. 3. Smart control optimising user experience. 4. Withstand water feed pressure: 1-3 kg/cm 5. 1/2" Water inlet	FEATURES	1. Boiling water keep up to 98°C ~ 100°C and doesn't lower the temperature. 2. Overload Relay cuts off electrical power if temperature rises to an unsafe level. 3. Hot Water Tank Insulation foam, UL approved 4. Withstand water feed pressure: 1-3 kg/cm 5. 1/2" Water inlet
1. Parts: Main Body; Power cord; Water Tubes; PP Fittings 2. Filter System (if applicable)	PACKAGE CONTENTS	1. Parts: Main Body; Power cord; Water tray; Water Tubes; PP Fittings 2. Filter System (if applicable)
1. 6 months against Manufacturer's defects 2. 1 Year against Manufacturer's defects if installed with 'Gorani' Filter System. 3. Optional Add-On Warranty	WARRANTY	1. 6 months against Manufacturer's defects 2. 1 Year against Manufacturer's defects if installed with 'Gorani' Filter System. 3. Optional Add-On Warranty



DANUBE WA:
Hot Water Only
Comes in 8L/16L/25L.

'Wa' DANUBE Hot water boiler is beneficial as:

DANUBE WB:
Hot Water Only

A long-term investment, SAVE money! It cuts waiting, SAVE time!

It is ideal to use at pantry, commercial kitchen & F&B establishments.

It comes with a set of Purification Water Filter System from Italy and 1 year

Warranty against manufacturer defects, extended warranty option is available!

Water filter replacement is suggested within 3 to 6 months. Good water, better life!

Contact us for more information!

WA	MODEL	WB
PHYSICAL		
Stainless Steel Hot Water Dispenser	TYPE	Stainless Steel Hot Water Dispenser
8H: 305mm(W)X290mm(D)X466mm(H) 16H: 355mm(W)X320mm(D)X566mm(H) 25H: 405mm(W)X350mm(D)X616mm(H)	PRODUCT DIMENSION	330mm(W)X210mm(D)X480mm(H)
ELECTRIC		
AC220~240V 50/60Hz, 110V 50/60Hz	POWER	AC220~240V 50/60Hz, 110V 50/60Hz
1500W~2400W	POWER CONSUMPTION (HOT)	1500W
MECHANICAL		
98°C ~ 100°C	WATER TEMPERATURE	98°C ~ 100°C
Capacity: 8 Liters / Running: 15 L/hr Capacity: 16 Liters / Running: 25 L/hr Capacity: 25 Liters / Running: 45 L/hr Pre-Filtered Water	WATER RESERVOIR / CAPACITY (ALL STAINLESS BUILD)	Capacity: 10 Liters / Running: 20 Liters/hour
'Tomlinson' USA No-Drip Press Red Lever / Child Safety Lock Lever (Optional)	FAUCET (HOT)	'Tomlinson' USA No-Drip Press Red Lever / Child Safety Lock Lever (Optional)
24 hours instantaneous	FACILITY	24 hours instantaneous
1. Boiling water keep up to 98°C ~ 100°C and doesn't lower the temperature. 2. Overload Relay cuts off electrical power if temperature rises to an unsafe level. 3. Smart control optimising user experience. 4. Withstand water feed pressure: 1-3 kg/cm 5. 1/2" Water inlet	FEATURES	1. Boiling water keep up to 98°C ~ 100°C and doesn't lower the temperature. 2. Overload Relay cuts off electrical power if temperature rises to an unsafe level. 3. Hot Water Tank Insulation foam, UL approved 4. Withstand water feed pressure: 1-3 kg/cm 5. 1/2" Water inlet
1. Parts: Main Body; Power cord; Water Tubes; PP Fittings 2. Filter System (if applicable)	PACKAGE CONTENTS	1. Parts: Main Body; Power cord; Water tray; Water Tubes; PP Fittings 2. Filter System (if applicable)
1. 6 months against Manufacturer's defects 2. 1 Year against Manufacturer's defects if installed with 'Gorani' Filter System. 3. Optional Add-On Warranty	WARRANTY	1. 6 months against Manufacturer's defects 2. 1 Year against Manufacturer's defects if installed with 'Gorani' Filter System. 3. Optional Add-On Warranty